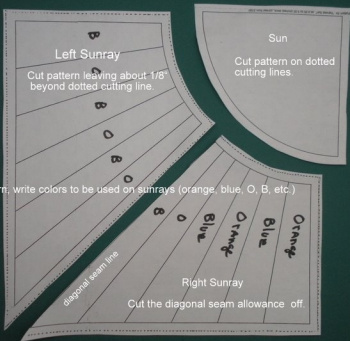


1

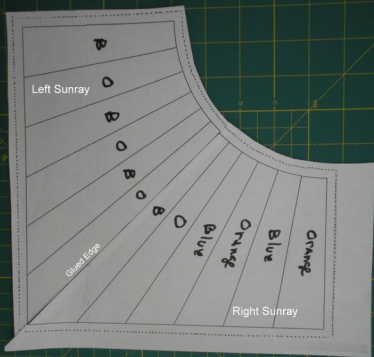


2

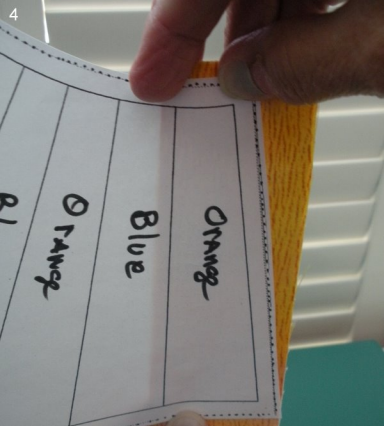
Left Sunray

Apply glue to seam allowance of left sunray using scrap of paper to protect surface below.



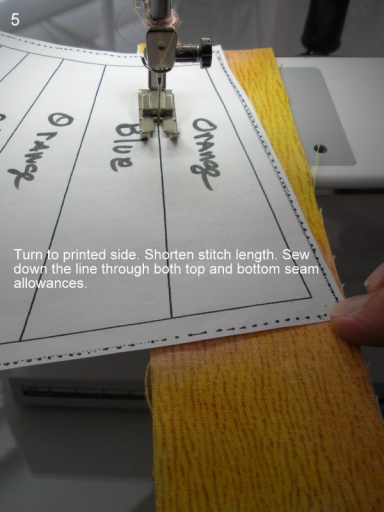


Place right sunray over glued seam allowance of left side to complete sunray pattern.



Place a strip of blue and a strip of orange fabric right sides together. Put wrong side of orange fabric against back of paper leaving about a 1/4" seam allowance on the left. Be sure to cover the entire orange strip and seam allowance on the right.

5



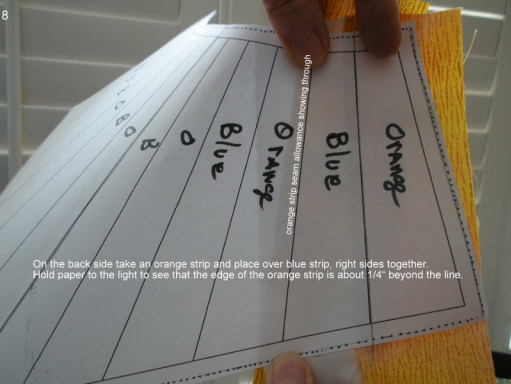
Turn to printed side. Shorten stitch length. Sew down the line through both top and bottom seam allowances.

After sewing, the back will look similar to this.

Q
B/105
Q 1441
B/105

Trim seam to scant 1/4" if needed then
press blue side over the seam allowance.





orange strip seam allowance showing through

On the back side take an orange strip and place over blue strip, right sides together. Hold paper to the light to see that the edge of the orange strip is about 1/4" beyond the line.

Orange

Blue

Orange

Sew along line and through the seam allowances.

20 27 28 29 30

B/c

o

B

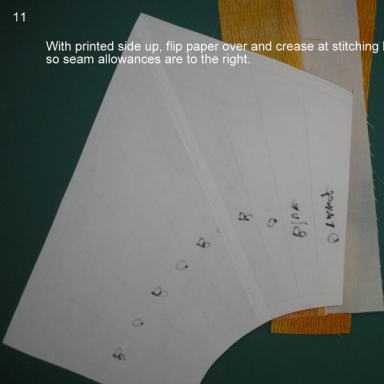
B

o

B

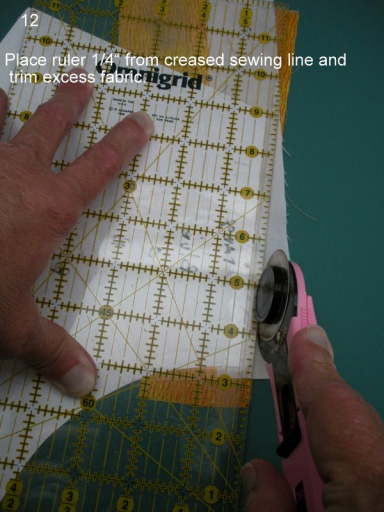
The backside will look similar to this.

With printed side up, flip paper over and crease at stitching line so seam allowances are to the right.



12

Place ruler 1/4" from creased sewing line and trim excess fabric.



13

9 1/2

8"

Press orange strip over the seam allowance.

B O

B

O

B



Continue sewing on strips until paper is covered.



15

If you sew a strip incorrectly, snip seam with scissors while slightly tugging on the strip with your other hand.

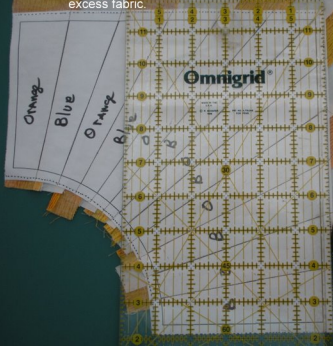


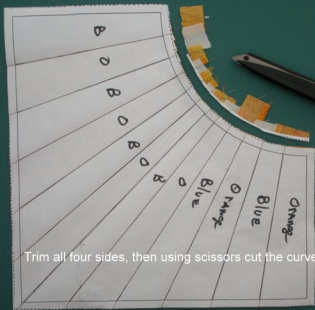
The image shows a collection of fabric strips, alternating in color between a bright orange and a plain white. These strips are laid out on a solid teal background in a fan-like pattern, radiating from the bottom left towards the top right. Each strip is rectangular and appears to be made of a woven fabric. The strips are slightly overlapping, creating a sense of depth and movement. The lighting is even, highlighting the texture of the fabric and the vibrant colors.

After sewing strips on, it will look similar to this.

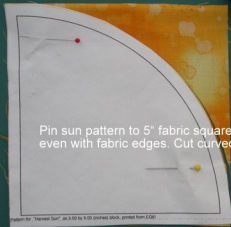
17

Working from the printed side, put the 1/4" line of the ruler on the solid seam line of the pattern. Trim off the excess fabric.





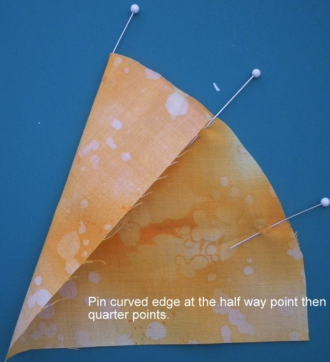
Trim all four sides, then using scissors cut the curved edge.



Pin sun pattern to 5" fabric square with straight edges even with fabric edges. Cut curved edge.

Pattern for "Harvest Sun" .as 9.00 by 9.00 (inches) block, printed from E06






Pin curved edge at the half way point then the quarter points.

Pin sunray piece at the half way point then the quarter points.

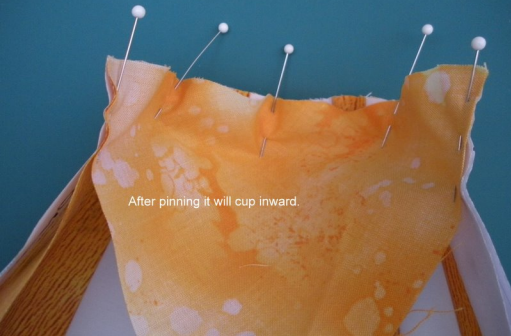




The pieces will look like this.

A close-up photograph showing a piece of aged, yellowed paper with brown stains being pinned to a wooden surface. The paper is held in place by several white-headed pins. The background is a dark teal surface. The text 'Match and pin the half way point, the quarter points, then pin the edges.' is overlaid on the image.


Match and pin the half way point, the quarter points, then pin the edges.



After pinning it will cup inward.




Set stitch length to a regular stitch, then sew 1/4" from the edge, removing pins as you get to them.

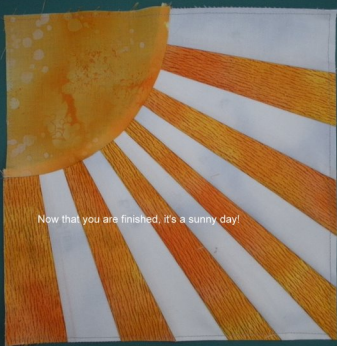


Press sunrays towards sun. If, on the paper side, you see you have sewn inside the seam allowance, resew (see next picture).

seam too narrow here



Turn paperside up and resew where seam is off.



Now that you are finished, it's a sunny day!